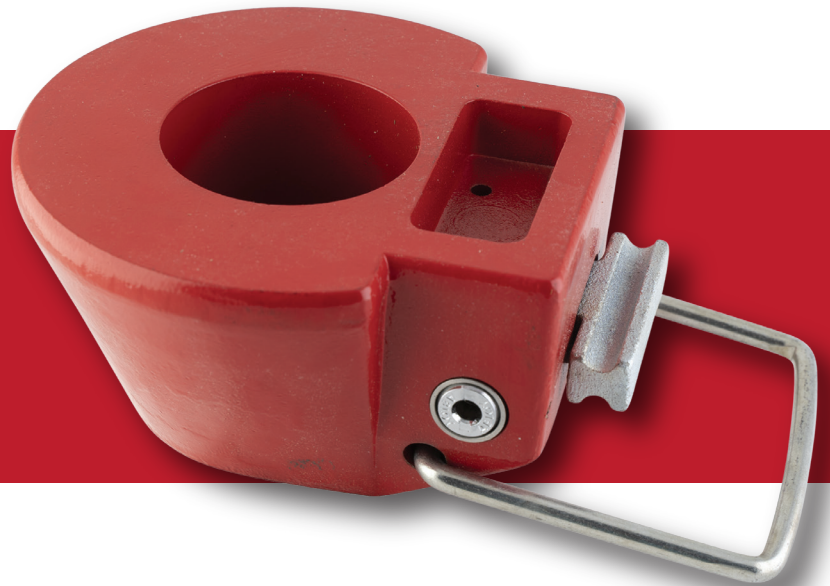


THE
ENFORCER[®]
TRANSPORT SECURITY, INC.

KING PIN LOCK #1112

**Secures dropped
truck trailer or
shipping container.**



**Customized Keying
Solutions**

Locks can be keyed alike, different or different to a master system. Keys are made of strong nickel silver to provide smooth, reliable operation with lasting durability.

Heavy Duty Cylinders

ABLOY lock cylinders utilize rotating discs instead of the traditional springs and pins. Cylinder keyway face spins freely to prevent drill bits from penetrating the lock.

Multiple Locks. One Key.

Master keying systems can be applied across various types of locks. For example, your padlock, King Pin and Adjustable Trailer Locks can all be keyed alike.* One key opens all of your locks.

Conical King Pin Lock for Trailers and Containers

ENFORCER[®] King Pin Lock #1112 is portable and easy to install. It covers and locks the king pin to prevent unauthorized trailer hook ups. This conical-shaped lock is made out of cast aluminum alloy. The enclosed design captures grease for a clean installation. An ABLOY[®] high security lock cylinder is integrated into the lock. ABLOY lock cylinders are designed with rotating discs, like the tumblers in a bank safe, instead of the traditional springs and pins.



*If you are interested in possibly adding Air Cuff Locks to a master system in the future, we need to be notified before system is created.

820 South Pine Street
Waconia, Minnesota 55387

(800) 328 - 3442
(952) 442 - 5625

TransportSecurity.com
enforcer@transportsecurity.com